

ELkRMS

Part # ELkRM

Remote Management Software

PC & ELK Touchscreen Edition

ELK
PRODUCTS, INC.

www.elkproducts.com

PO Box 100
3266 US Hwy 70 West
Hildebran, NC 28637
828-397-4200 Voice
828-397-4415 Fax

Operating Instructions

Home

The Home page is used to access other pages within the software. Not all pages/features are available on all systems. This page also displays basic information such as date/time and area name.



Options

The touchscreen version of ElkRMS has options for adjusting backlight and volume settings. To access these settings, click the Options button located under the display window on the Main page.



Max Backlight Level: This drop down box allows the adjustment of the maximum or active backlight intensity level. This level can be adjusted from 10 percent to 100 percent in increments of 10 percent.

Backlight Timeout Duration: If there is no activity on the touchscreen for the length of time selected in this drop down box, the backlight will be adjusted to the minimum intensity level. If NEVER is selected, the backlight will always remain at the maximum intensity level.

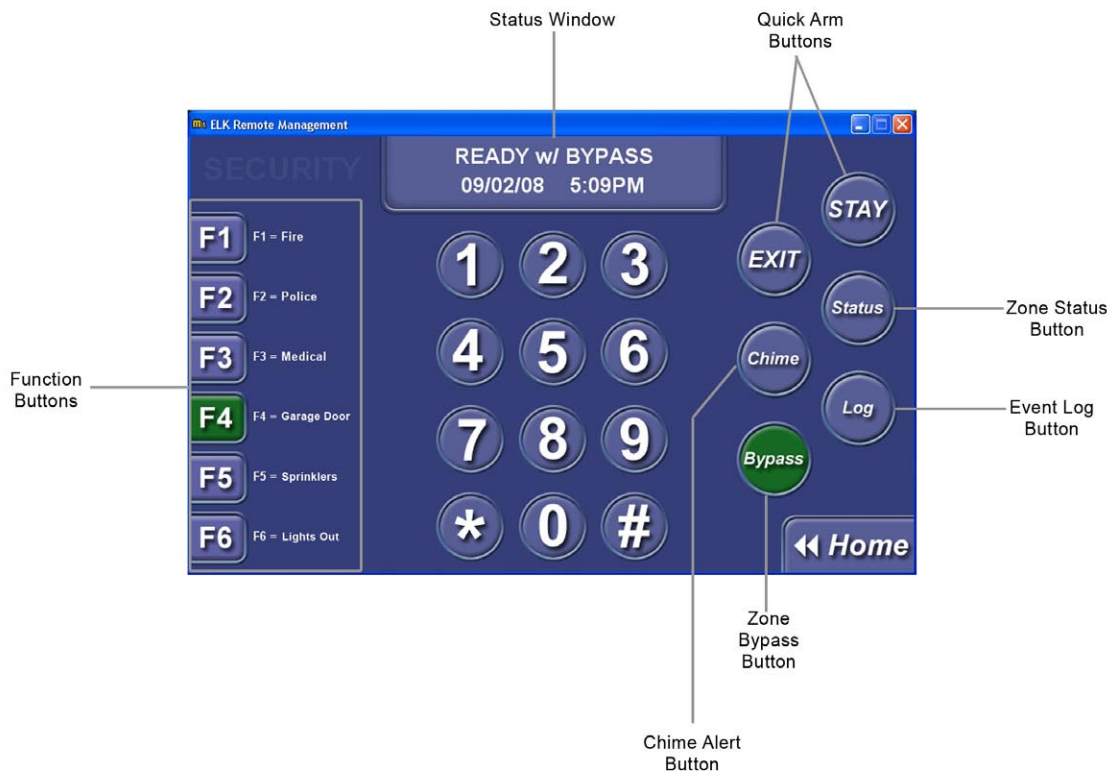
Min Backlight Level: This drop down box allows the adjustment of the minimum or inactive backlight intensity level. This level can be adjusted from 0 percent (or OFF) to 90 percent in increments of 10 percent.

Volume Level: If Enable Audible Key Presses is selected on the OPTIONS page, the volume of the key press tone can be adjusted using this drop down box. The volume level can be adjusted from 0 percent (or OFF) to 100 percent in increments of 10 percent.

Screensaver Timeout: If there is no activity on the touchscreen for the length of time selected in this drop down box, the photo screensaver feature will be activated. Select NEVER to disable the screensaver feature.

Security

To access the Security page, click the Security button on the Home page. The security page displays overall system status and provides many of the operational capabilities that are available from a physical keypad.



Status Window: Displays current arm status/mode, date, and, time. It also displays system messages for chime and bypass features.

Quick Arm Buttons: Allows single or double press arming of the system.

- **Exit Button-** Arms to Away Mode, toggles to Vacation Mode
- **Stay Button-** Arms to Stay Mode, toggles to Stay Instant, Night, and Night Instant (some modes not available on all systems)

To toggle the arm mode, click the quick arm key multiple times. The Status Window will display the arm mode. The Exit button will be illuminated when the system is armed in Away or Vacation Mode. The Stay button will be illuminated when the system is armed in Stay, Stay Instant, Night, or Night Instant Mode.

Function Buttons: These 6 “F” buttons may be used as panic buttons or to perform other functions such as open/close the garage door, turn on lights, etc. A description appears under each button, indicating its function. The button may also illuminate (as shown on the F6 button in Figure 1) to indicate the alarm is activated, the garage door is open, the light is on, etc.

Chime Mode Button: This button is used to activate the Chime feature. This feature provides an audible alert when certain doors, windows, etc. are violated. There are four different selections for the Chime Feature: Tone, Voice, Tone/Voice, and Off. Click the Chime button to toggle between the selections. The Status Window will display the Chime mode as the key is pressed. When the chime is active the button is illuminated.



When the Chime is activated in voice mode, the voice messages can be heard on the speakers connected to output 1 only. The ElkRMS software does not output voice on the computer, PDA, or touchscreen on which it is installed. However, when the Chime is activated in one of the two tone modes, a chime tone can be heard from the device.

Zone Bypass Button: This button is used to temporarily exclude a zone from the system, preventing it from activating an alarm. The zone is excluded until the system is disarmed, or the zone bypass is cancelled.

Bypassing a Zone

1. Press the Bypass button
2. Enter the number of the zone you wish to bypass
3. Press the Bypass button again
4. If the zone is bypassed, the Bypass button will be illuminated and the status window will display Ready w/ Bypass.

A zone bypass can be cancelled by following the steps above. If the zone is un-bypassed, the bypass button will return to gray.

Quick Bypass of Violated Zones

This feature allows you to easily bypass all violated zones.

1. Press the Bypass button
2. Enter 999
3. Press the Bypass button again
4. If the Quick Bypass is accepted, the Bypass button will be illuminated and the status window will display Ready w/ Bypass.



Only zones that have been programmed as bypassable can be bypassed. Furthermore, bypassing of zones is only available if the user code which was used to log onto ElkRMS actually has the bypass privilege enabled.

Zone Status Key: Click this button to display the Zone Status pages as shown below. Each page provides a quick view of the current status of up to 12 zones. It also allows you to easily bypass zones (if enabled).



The button next to each zone displays the zones current status. A zone can be bypassed by clicking the button next to the zone name.



Indicates that zone is normal or secure



Indicates that zone is violated or not secure



Indicates that zone is bypassed



Only zones that have been programmed as bypassable can be bypassed. Furthermore, bypassing of zones is only available if the user code which was used to log onto ElkRMS actually has the bypass privilege enabled.

Each page displays up to 12 zones at a time. If the system has more than 12 zones, a navigation bar will appear at the bottom of the screen. The navigation bar allows additional pages of zones to be accessed. To access a particular page, click on the page number in the center of the navigation bar. A list of pages will appear. Select the page you wish to view by clicking the page number in the list. The page number area of the navigation bar works like a slider, allowing you to scroll through the pages. Slide from left to right to go to the next page. Slide from right to left to go to the previous page. Click the << button on the left side of the navigation bar to go to Page 1. Click the >> button on the right side of the navigation bar to go to the last page. If there are not more than 12 zones programmed in the system, the navigation bar will not appear.

Event Log Button: Click this button to access the event log, which contains security and system event information such as arming, disarming, zone bypassing, alarms, troubles, etc. as shown below.



The event log displays information for each event including the date and time the event occurred and a description of the event. You can view the newest 20 events or the entire log by clicking the corresponding button. To return to the security screen click the Back button in the lower left corner. To return to the Home screen, click the Home button in the lower right corner.

Lighting

To access the lighting pages click on the Lighting button on the Home page. Each page allows you to turn lights on/off, adjust bright/dim levels, etc. for up to 8 lights.



Lights can be controlled using the Light buttons and the sliders. Click on the Light button to turn the light on and off. To adjust the bright/dim level of the light adjust the slider.

 **Not all light formats support the use of the sliders.**

Each page displays up to 6 lights at a time. If the system has more than 6 lights, a navigation bar will appear at the bottom of the screen. The navigation bar allows additional pages of lights to be accessed. To access a particular page, click on the page number in the center of the navigation bar. A list of pages will appear. Select the page you wish to view by clicking the page number in the list. The page number area of the navigation bar works like a slider, allowing you to scroll through the pages. Slide from left to right to go to the next page. Slide from right to left to go to the previous page. Click the << button on the left side of the navigation bar to go to Page 1. Click the >> button on the right side of the navigation bar to go to the last page. If there are not more than 6 lights programmed in the system, the navigation bar will not appear on the screen.



IMPORTANT:

Only lights that have the proper equipment and are interfaced to the M1/EZ8 system may be controlled. The current state of the light may not always be accurate, particularly when there are other controllers or automation devices installed or the lighting devices do not provide the status.

Climate

To access the climate pages, click on the Climate button on the Home page. The Climate pages allow you to control thermostats connected the system and view the current temperature of the keypads and temperature sensors connected to the system.

Thermostat Page

If thermostats are programmed in the system, the Thermostat page will be displayed when the Climate button is pressed.



The current temperature at the thermostat is displayed in the center of the page.

Selecting Thermostats: A navigation bar at the top of the screen allows additional pages of lights to be accessed. To access a particular thermostat, click on the thermostat name in the center of the navigation bar. A list of thermostats will appear. Select the page you wish to view by clicking the thermostat name in the list. The thermostat name area of the navigation bar works like a slider, allowing you to scroll through the thermostats. Slide from left to right to go to the next thermostat. Slide from right to left to go to the previous thermostat. Click the << button on the left side of the navigation bar to go to the first thermostat. Click the >> button on the right side of the navigation bar to go to the last thermostat.

Heating Setpoint: Use the up and down arrows to adjust the Heating setpoint. The current setpoint is displayed between the up and down buttons.

Cooling Setpoint: Use the up and down arrows to adjust the Cooling setpoint. The current setpoint is displayed between the up and down buttons.

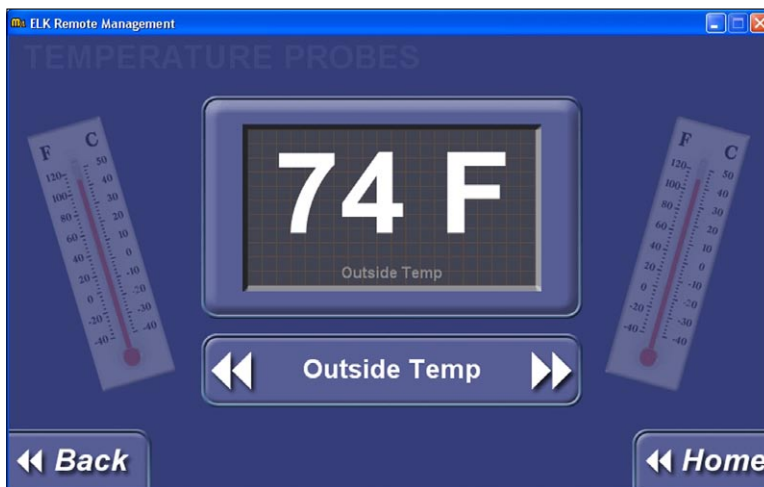
Off, Heat, Cool, Auto Buttons: These buttons allow you to change the thermostat mode.

Hold: This button allows you turn the Hold setting On or Off.

Fan: This button allows you to change the fan setting to Manual or Auto

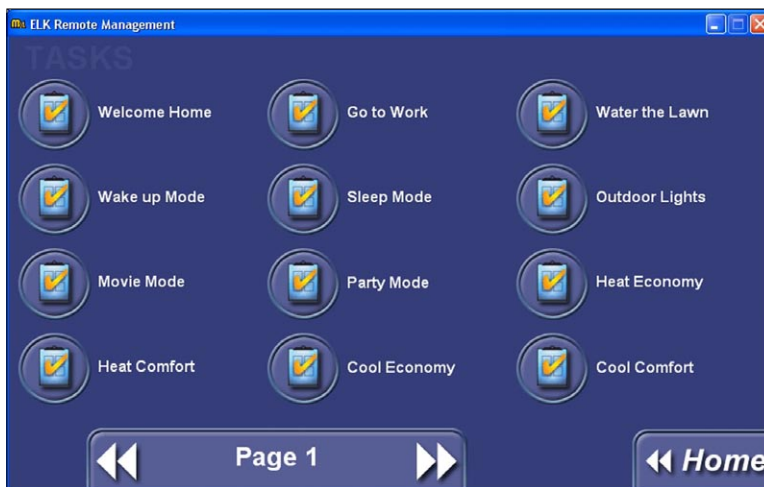
Sensors

If you have other temperature sensors attached to your system click on the sensors button at the top of the page. This will display the current temperature of all the keypads and temperature sensors connected to the system as shown below. The system can have a maximum of 16 keypad and 16 temperature probes.



Tasks

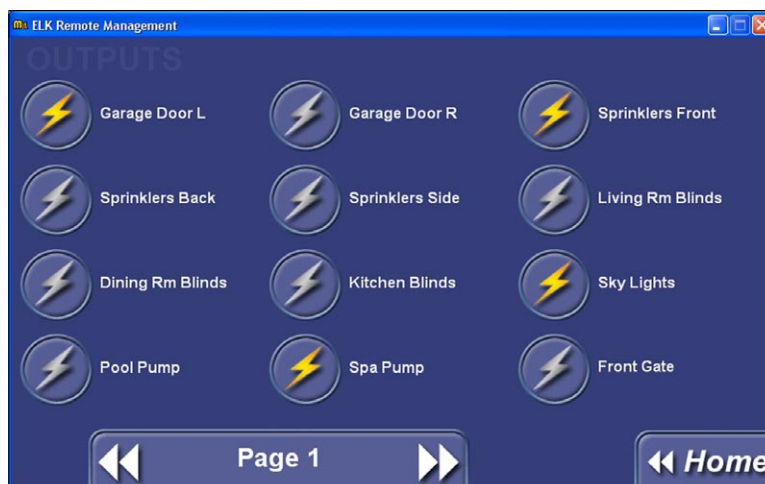
To access the task pages (shown below) click on the Tasks button on the left side of the screen. This screen allows you to activate up to tasks that have been programmed in the system. Up to 12 tasks are displayed on each page.



Each page displays up to 12 tasks at a time. If the system has more than 12 tasks, a navigation bar will appear at the bottom of the screen. The navigation bar allows additional pages of tasks to be accessed. To access a particular page, click on the page number in the center of the navigation bar. A list of pages will appear. Select the page you wish to view by clicking the page number in the list. The page number area of the navigation bar works like a slider, allowing you to scroll through the pages. Slide from left to right to go to the next page. Slide from right to left to go to the previous page. Click the << button on the left side of the navigation bar to go to Page 1. Click the >> button on the right side of the navigation bar to go to the last page. If there are not more than 12 tasks programmed in the system, these buttons will not appear.

Outputs

To access the output pages click on the Outputs button located on the left side of the screen. The Output pages allow you to control up to 12 outputs per page, which may be used to open/close the garage door, open/close blinds, turn sprinklers on/off, etc.

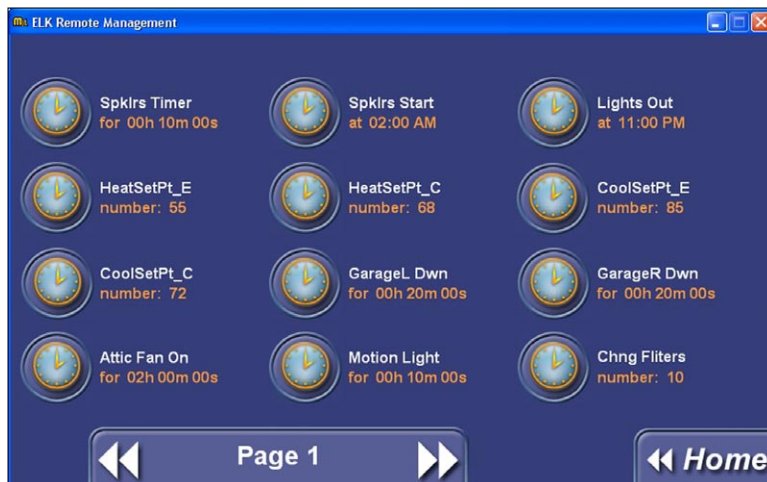


An output can be turned on or off by clicking the button beside of the output name. The button will be illuminated when the output is on.

Each page displays up to 12 outputs at a time. If the system has more than 12 outputs, a navigation bar will appear at the bottom of the screen. The navigation bar allows additional pages of outputs to be accessed. To access a particular page, click on the page number in the center of the navigation bar. A list of pages will appear. Select the page you wish to view by clicking the page number in the list. The page number area of the navigation bar works like a slider, allowing you to scroll through the pages. Slide from left to right to go to the next page. Slide from right to left to go to the previous page. Click the << button on the left side of the navigation bar to go to Page 1. Click the >> button on the right side of the navigation bar to go to the last page. If there are not more than 12 outputs programmed in the system, these buttons will not appear.

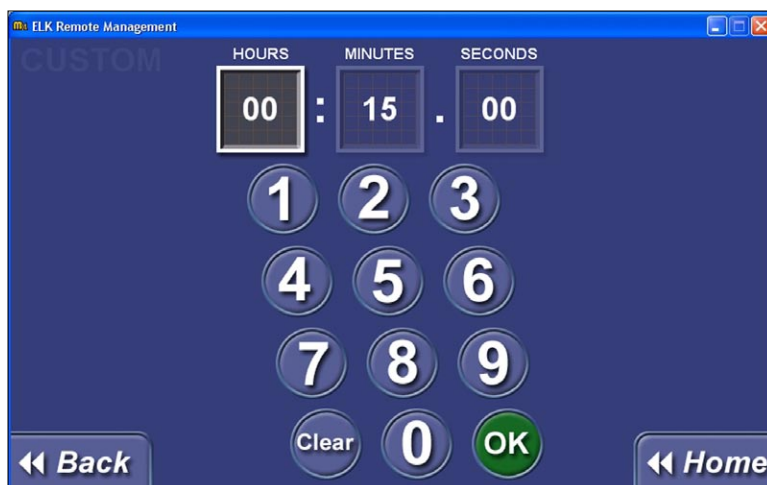
Custom Settings

To access the custom setting pages click on the Custom button on Home page. Each Custom Setting page allows you to make adjustments to up to 6 custom settings programmed into the system. Custom settings are used to make adjustments to certain aspects of the way your system is programmed. For instance, you may want to adjust the time that the lights or sprinklers come on, or how long they stay on.



Each page displays up to 6 custom settings at a time. If the system has more than 6 custom settings, a navigation bar will appear at the bottom of the screen. The navigation bar allows additional pages of custom settings to be accessed. To access a particular page, click on the page number in the center of the navigation bar. A list of pages will appear. Select the page you wish to view by clicking the page number in the list. The page number area of the navigation bar works like a slider, allowing you to scroll through the pages. Slide from left to right to go to the next page. Slide from right to left to go to the previous page. Click the << button on the left side of the navigation bar to go to Page 1. Click the >> button on the right side of the navigation bar to go to the last page. If there are not more than 6 custom settings programmed in the system, the navigation bar will not appear on the screen.

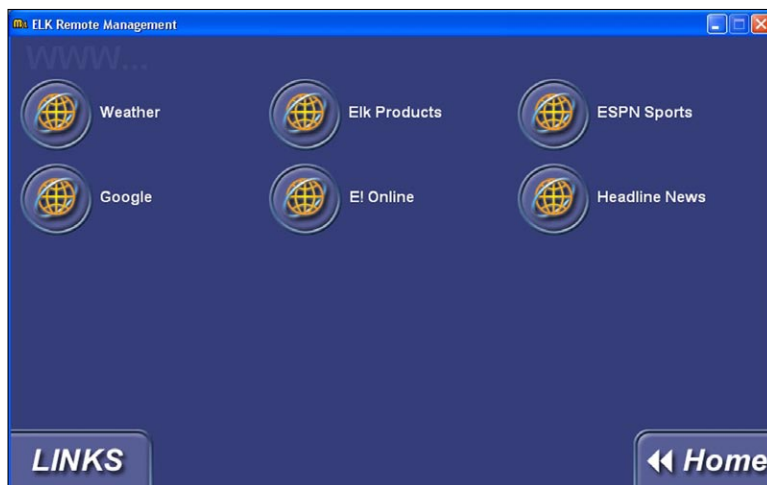
The Custom Setting pages display the current setting to the right of the custom setting name. To make an adjustment to a custom setting click on the button next to the custom setting name. This will display an individual page for the setting (shown below).



Use the number pad to make the desired adjustment to the setting. A custom setting may be a timer, a time of day, or a number. If the setting is a timer, this page will allow you to change the duration of the timer in hours, minutes, and/or seconds. If the setting is a time of day, this page will allow you to choose a different time of day in the 12 hour format with AM or PM indications. If the setting is a number, this page will allow you to enter a new number between 0 and 65,535.

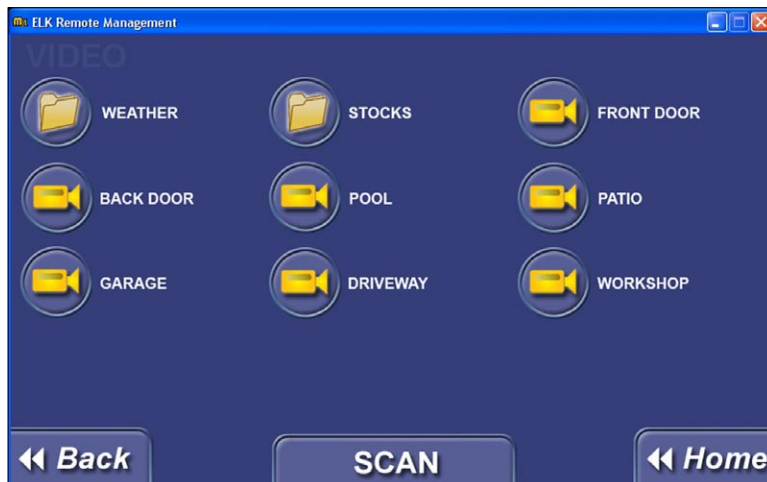
Links

To access the links screen click on the Links button on the Home page. The Links screen (shown below in Figure 14) allows you to access frequently visited websites. Links may be organized in folders. Each folder may contain up to 12 links. Up to 12 folders or links may be displayed on this screen. To open a folder, click the button beside the folder name. To access a webpage click on the button beside of the link name. An Internet connection is required to use the Links feature. For information on how links are set up, refer to the "RM Setup Utility" Section of the ElkRMS Product Manual.



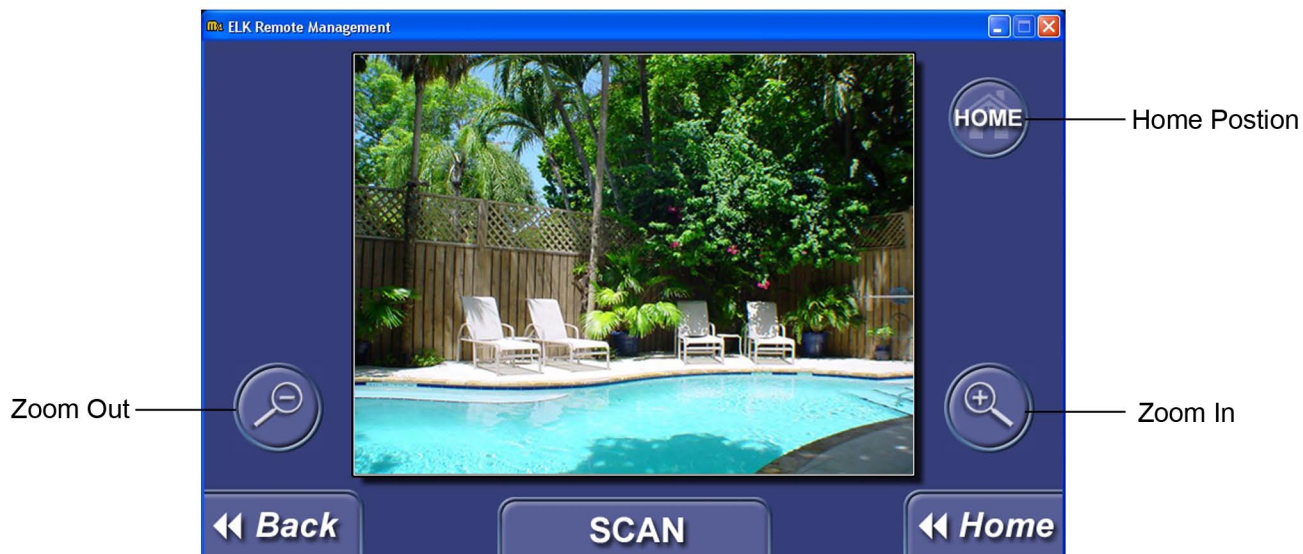
Video

To access the Video screen, click the Video button on the Home page. The Video screen allows you to access imagery from IP accessible cameras and DVRs as well as up-to-date weather, traffic, stock information, etc. from Internet websites. Cameras and images may be organized in folders. Each folder may contain up to 12 items. Up to 12 folders or items may be displayed on the screen. To open a folder, click the button beside the folder name. To view a camera or image click the button beside the camera/image name. You may scan through all the camera/images listed on the page by clicking the Scan button located in the upper right corner. This will display the imagery from each item for approximately 10 seconds. An Internet connection is required to use the Video feature. For information on how Video is setup, please refer to the "RM Setup Utility" section of the ElkRMS Product Manual.



Pan, Tilt, Zoom Navigation

Some cameras supported by ElkRMS feature pan, tilt, zoom capabilities. ElkRMS provides controls for these features as shown below.



Home Position: Returns camera to preset “Home” position. Please refer to the documentation from the camera manufacturer for instructions on setting the “Home” position

Zoom In/Out: Adjusts the zoom level of the camera

Pan and Tilt Navigation: To adjust the directional view of the camera, click on the camera image in the direction you would like the camera to move in. For example, to move the directional view of the camera down and to the right, simply click in the lower right corner of the image display.

Audio

To access the Audio screen, click the audio button on the Home page. The Audio screen allows you control the Russound Audio Distribution System. For information on how Audio is setup, please refer to the "RM Setup Utility" section of the ElkRMS Product Manual. The audio screen will show all the zones that have been setup in ElkRMS as shown below. To control a zone, click the button beside the zone name. The main screen for that zone will be displayed.

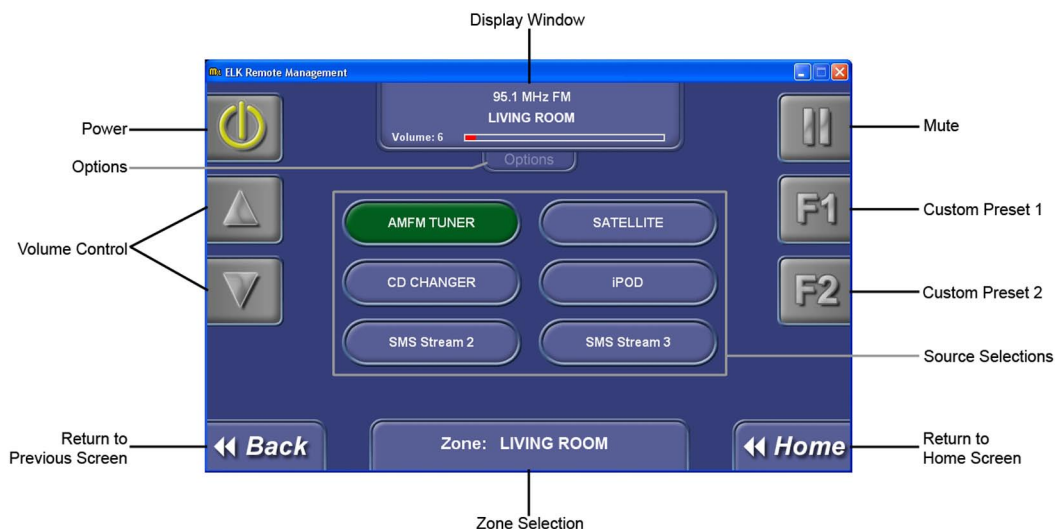


☞ If a particular zone has been selected on the options screen, the main screen for that zone will appear when you press the audio button. To see all zones, select Show All on the options screen.

Each page displays up to 12 audio zones at a time. If the system has more than 12 audio zones, a navigation bar will appear at the bottom of the screen. The navigation bar allows additional pages of audio zones to be accessed. To access a particular page, click on the page number in the center of the navigation bar. A list of pages will appear. Select the page you wish to view by clicking the page number in the list. The page number area of the navigation bar works like a slider, allowing you to scroll through the pages. Slide from left to right to go to the next page. Slide from right to left to go to the previous page. Click the << button on the left side of the navigation bar to go to Page 1. Click the >> button on the right side of the navigation bar to go to the last page. If there are not more than 12 audio zones programmed in the system, these buttons will not appear.

Main Screen

The Main screen is shown below. This screen allows you to select the audio source, adjust volume, select custom presets, etc.



Display Window: Displays source information and volume indicator.

Power: Turns power to selected zone on/off

Options: Allows the user to select the default zone to be displayed when the Audio button is pressed on the Home screen. Choose Show All to display all zones when the Audio button is pressed. This screen provides custom sound adjustments, allowing the bass, treble, balance, and loudness settings of the selected zone to be customized. This screen also allows the Turn on Volume (TOV) to be set, defining the volume level to be used each time the selected zone is turned on. To set the turn on volume, use the volume keys to set the volume to the desired “turn on” level and click the TOV button. After the TOV has been set, the volume will automatically be set to that level each time the zone is turned on, regardless of the volume level setting when the zone was turned off.

Volume Control: Adjust volume level up or down for selected zone.

Back: Returns to previous screen

Mute: Mutes the audio from the currently selected source.

Custom Preset 1 & 2 (F1 & F2): Stores a favorite source/channel and volume level for easy access. To set a custom preset, select the desired source/channel and volume setting. Then, press and hold the desired “F” key for approximately 5 seconds. After the “F” key has been set, pressing the key will automatically change to the “preset” source/channel and volume settings.

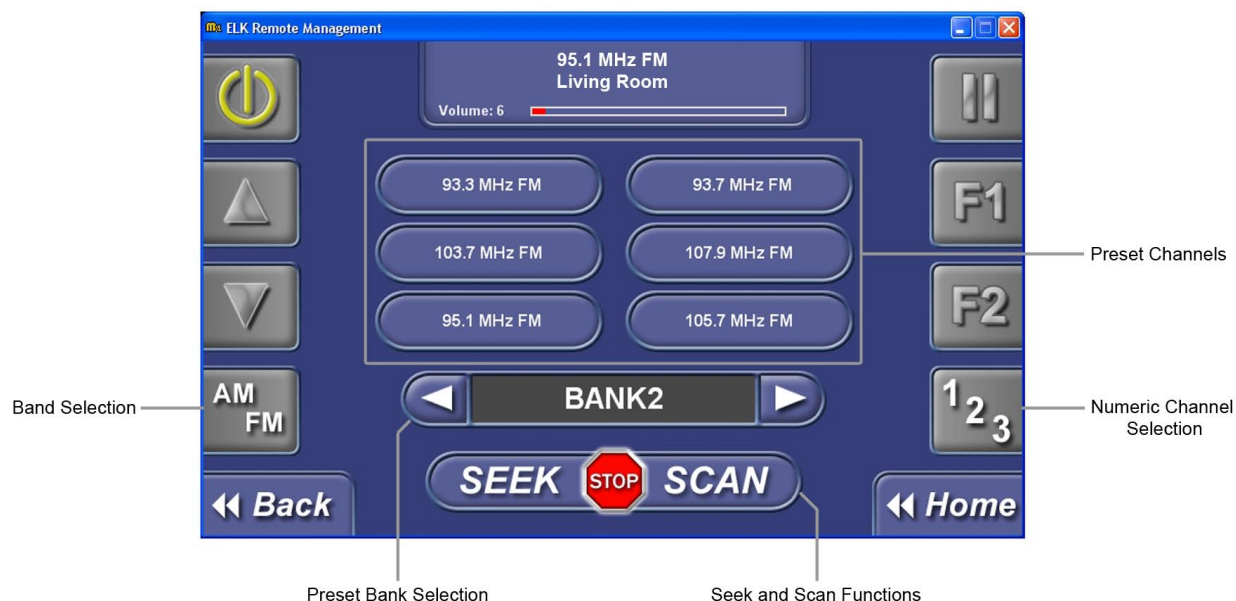
Source Selections: Allows the user to select an audio source. When a source is selected, the screen for that source will be displayed, allowing the user to select the desired channel, disc, track, etc.

Home: Returns to the ElkRMS Home screen

Zone Selection: Display the current audio zone. To change zones, click in this area. A screen will appear, allowing the user to select the desired zone.

AM/FM Tuner Screen

The AM/FM Turner screen is shown below. This screen allows you to select the desired channel, by choosing from presets, entering the channel number, using seek and scan functions, or simply using the tuning buttons.



Preset Channels: Up to 36 different channels may be stored as preset channels allowing you to easily access your favorite channels. Presets are stored in 6 different “banks” and 6 channels are displayed at one time. To tune to a preset channel, simply press the button for that channel. To set a channel in a preset location, tune to the channel you wish to store. Then press and hold the preset button until you see the channel number appear on that button.

Numeric Channel Selection: Press the Numeric Channel Selection button to display a numeric keypad. Enter the desired channel number and click DONE to return to the AM/FM screen. The TUNE + and TUNE - buttons can be used to scroll through all possible channel numbers.

Band Selection: The AM and FM buttons are used to select the desired band on the tuner.

Preset Bank Selection: Only 6 of the 36 preset channels can be displayed on the screen at one time. To access the other 30 presets, you must select a different “bank” of channels. This is done using the Preset Bank Selection buttons. You may scroll left or right through the preset banks, by pressing the right or left arrow, the bank number is displayed between the left and right arrow buttons.

Seek and Scan Functions: The seek function is used to locate the next channel with reception. The Scan function is used to scan through all channels with reception. The tuner will tune to each channel for several seconds, and move on the next channel. When the tuner is tuned a desired channel, press the STOP button to end the scan. The tuner will remain tuned to the selected channel.

Satellite Tuner

The satellite tuner screen is shown below. This screen allows to select the desired channel by choosing from presets, entering the channel number, using category and channel selection, or simply using the tuning buttons.



Preset Channels: Up to 36 different channels may be stored as preset channels allowing you to easily access your favorite channels. Presets are stored in 6 different “banks” and 6 channels are displayed at one time. To tune to a preset channel, simply press the button for that channel. To set a channel in a preset location, tune to the channel you wish to store. Then press and hold the preset button until you see the channel name appear on that button.

Preset Bank Selection: Only 6 of the 36 preset channels can be displayed on the screen at one time. To access the other 30 presets, you must select a different “bank” of channels. This is done using the Preset Bank Selection buttons. You may scroll left or right through the preset banks, by pressing the right or left arrow. The bank number is displayed between the left and right arrow buttons.

Numeric Channel Selection: Press the Numeric Channel Selection button to display a numeric keypad. Enter the desired channel number and click DONE to return to the Satellite Tuner page. The TUNE + and TUNE - buttons can be used to scroll through all channel numbers.

Category and Channel Selections: Each channel belongs to a particular category, which is setup by the satellite radio service provider. This allows you to scroll through all channels that have a common theme, such as pop music, or news radio. To scroll through or select a category, press the left or right arrow on the category selection bar. The category name will be displayed between the left and right arrow buttons. Once a category is selected, you may scroll through the channels in that category by pressing the left or right arrow button on the channel selection bar.

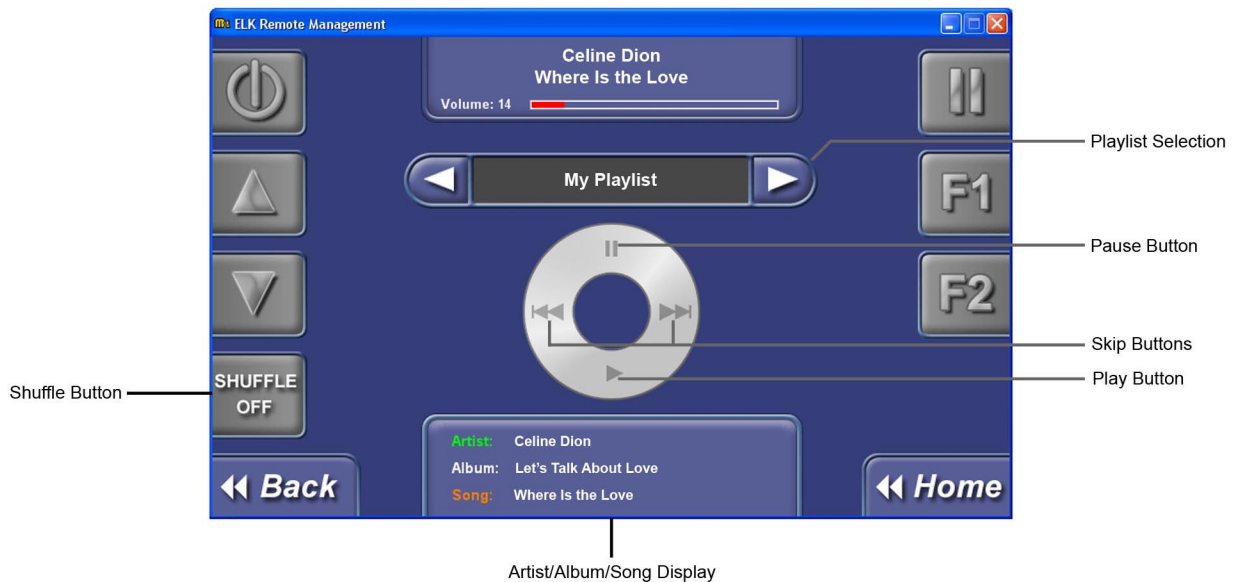
CD Changers/ Players

The 5 CD changer screen is shown below. The screens for a 6 disc changer and a CD player have similar controls. The function of each button is shown in the figure below.



Ipod iBridge

The Ipod screen is shown below. This screen allows you to select from music stored on your Ipod. Music can be selected by playlist, genre, artist, album, or song title.



Playlist Selection: Click the arrow buttons to scroll through the playlists in the Ipod. The name of the playlist is displayed in between the arrow buttons.

Skip Buttons: These buttons allow you to advance forward or backward through current playlist.

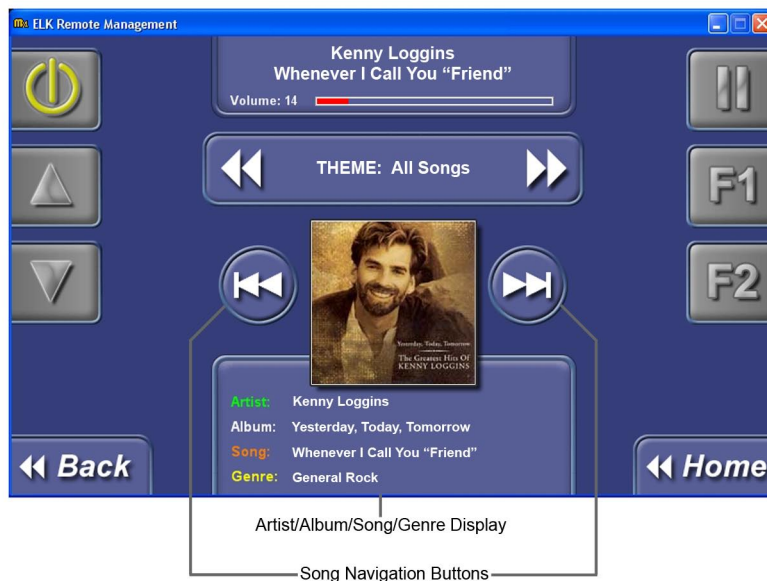
Play/Pause Button: Click this button to pause the current song. To resume playing the song, click the button again.

Album/Title Display: The top line of the display shows the name of the album. The bottom line shows the song title.

Shuffle Button: Click this button to toggle the shuffle mode between off, songs and albums.

Media Server

The media server screen is shown below. This screen allows you to access music stored on the Russound SMS3 Media Server.



Song Navigation Buttons: These buttons allow you to scroll through the songs on the selected album

Music Selection Button: This button allows you to select music by navigating through a menu of categories including theme, genre, artist, album, song title, and internet radio.

Album/Genre Display: The top line of this display shows the name of the album that is currently selected. The bottom line displays the genre of the album.

Cleaning the Screen (For touch sensing screens only)

If ElkRMS is installed on a touchscreen, the Clean Screen option provides you with a blank screen, allowing you to clean the screen without unintentionally pressing any buttons. To access the Clean Screen option click on Options button on the Home page. This will display the settings screen. Click the Clean Screen button located in the center of the screen as shown below.



A blue screen with a 30 second count down will be displayed. After 30 seconds the display will return to the page setup screen. Click the Back button on the lower left side screen to return to the Home page.



Printed in USA